

# THE SHAPE OF PERFECTION





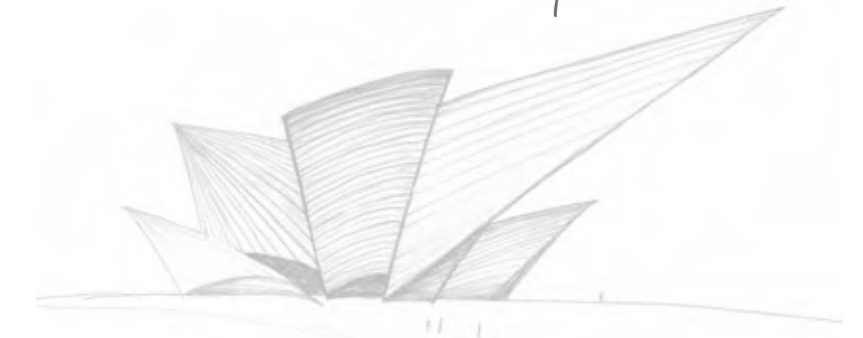
# ROOFS SHOULD NOT CONSTRICT. THEY SHOULD LIBERATE.



Architect Louis Henri Sullivan believed that form follows function, and we agree that this philosophy opens up a whole host of architectural possibilities. Sounds like a contradiction? Not if you take a leaf from the book of the all-time greatest designer: Mother Nature.

Leaves are the archetypal roof. They are the ideal shape for their environment, perfectly designed to meet the demands of very specific conditions. What's more, leaves boast astounding natural variety, fueling our creative imagination.

*"If I'm in need of inspiration,  
I take a walk through the woods."*



*BEMO makes roofs that push back boundaries and test the limits of the possible. We enable designers and architects to cast off the shackles of convention. At the same time, we fulfill a basic human need for secure, safe roofs and façades – by delivering high-quality, high-tech systems and over 30 years' experience.*

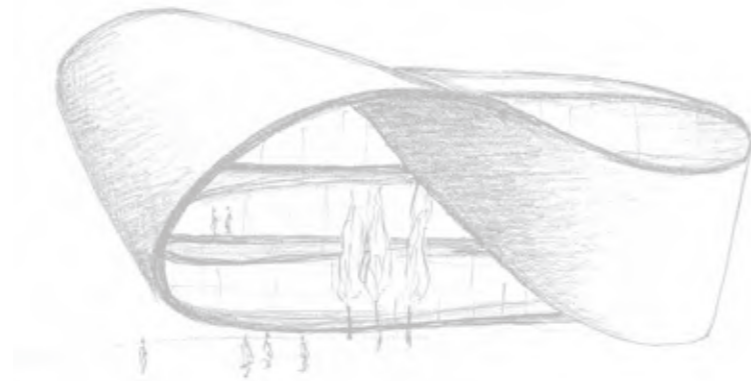


# WITH BEMO, THERE'S ONLY ONE RULE: FORGET THE RULES.



Explore your own individuality, and your personal style. BEMO specializes in projects that appear impossible at first glance. The patented, award-winning BEMO-MONRO® system enables designs that, for a long time, were simply not possible. It is a revolution in roofing and façade design for free-form architecture.

*Innovative surface technologies ensure our products make a lasting impression. Our coatings are available in every conceivable hue, in a variety of finishes. The more unusual they are, the greater the impact. Join us on a journey of discovery and of diversity.*



*"That's impossible!  
Those words make me angry.  
But they are also a tremendous motivation."*



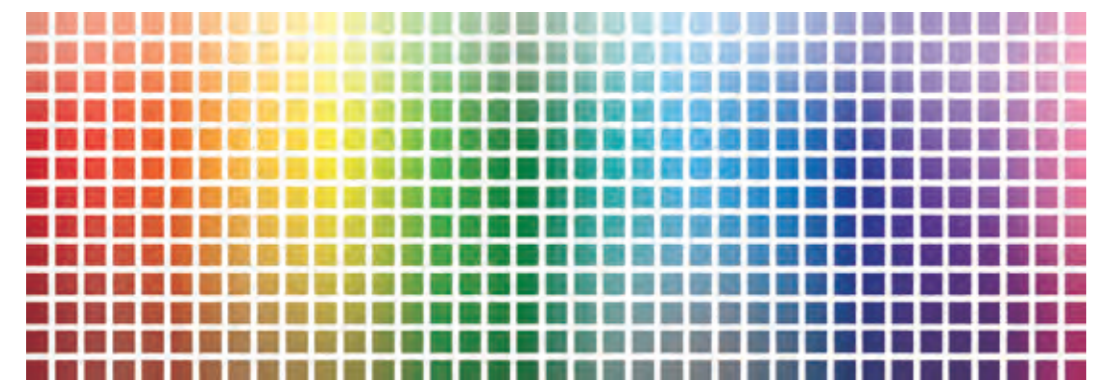
# NO LIMITS



## RICH COLORS

### Creativity without constraints.

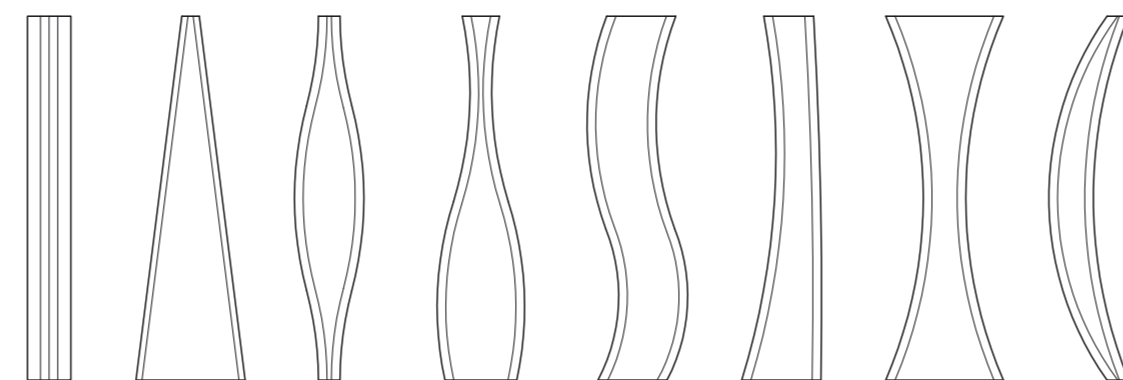
BEMO offers an extensive choice of paints and coatings of more than 40 000 colors. Which means you can have any shade and any finish you want – from matte to high gloss. What's more, you can combine multiple colors in a single project, or create the perfect head-turner with our special effects. Be inspired by the vivid world of BEMO.



## VARIABLE FORMS

### Planning and design: exploring new dimensions.

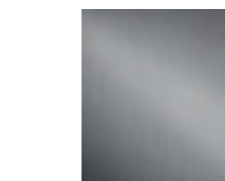
Using three-dimensional designs, BEMO metal profiles can meet the requirements of almost any free-form architecture. Using innovative, patented production processes, the traditional limits of construction technology are practically a thing of the past. Each metal profile can be formed to meet your precise demands, and bent to the exact curvature required. Enabling your vision to become an architectural reality.



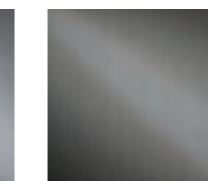
## DIVERSE MATERIALS

### Innovative design is not only unique. It is also reusable.

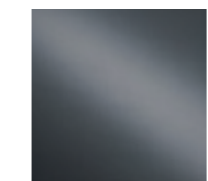
BEMO offers a broad portfolio of materials, allowing you to make the right choice for your building in terms of aesthetics, function, load-bearing capacity and cost efficiency. High-quality aluminum alloys are at the core of our range. They are 100 percent recyclable, highly malleable and resistant to corrosion. All our solutions are also available in steel, stainless steel, copper and titanium zinc. We supply the material you seek to realize your architectural vision.



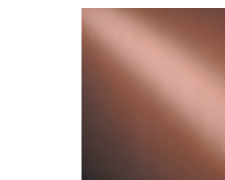
Aluminium



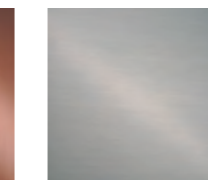
Stainless steel



Steel



Copper



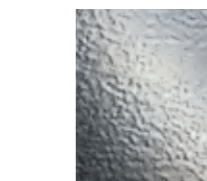
Titanium zinc



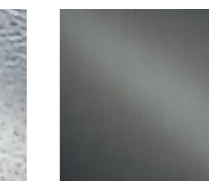
COR-TEN® Steel



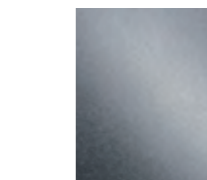
## SMART SURFACES



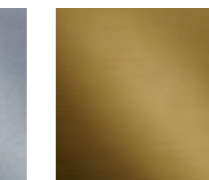
Stucco



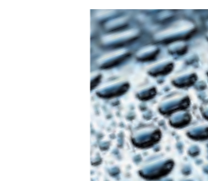
Brushed



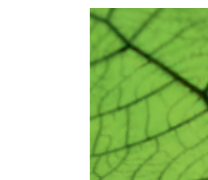
Aluzinc



Eloxal



BEMO-FLOX



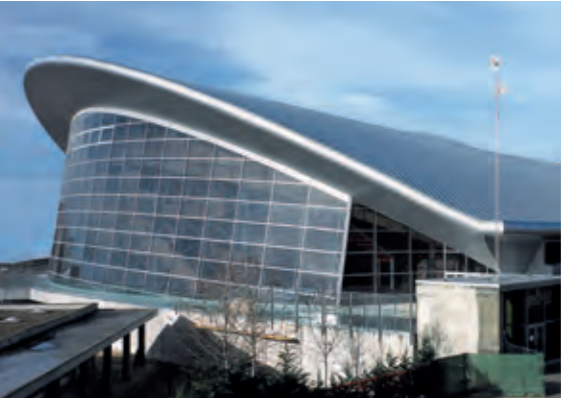
BEMO-EcoClean™

### For the best first impressions. And the best finishing touches.

Selecting the right surface increases the visual appeal of the base material and adds a layer of protection against environmental influences. When exposed to the elements, natural metal surfaces acquire a fascinating patina. The hydrophobic coating BEMO-FLOX is highly resistant to UV light, can be re-applied at any time and is available in all finishes – from matte to high gloss. And thanks to our BEMO-EcoClean™ coating, nitrogen oxides in the atmosphere are actively neutralized, offering smart protection now and in the future.



Valencia Opera House // Spain  
Usage: culture  
Profile: N65 - 400  
Material: 1.0 mm aluminum  
Color/Surface: stucco  
Area: 3 600 m²



Valencia Opera House // Spain  
Usage: culture  
Profile: N65 - 400  
Material: 1.0 mm aluminum  
Color/Surface: stucco  
Area: 3 600 m²

University // Netherlands  
Usage: education  
Profile: N65 - 400  
Material: 1.0 mm aluminum  
Color/Surface: stucco  
Area: 5 300 m²

Multipurpose Arena // Spain  
Usage: sports  
Profile: N65 - 400  
Material: 1.0 mm aluminum  
Color/Surface: silver metallic / PE  
Area: 7 400 m²

Dubai Flower Center // UAE  
Usage: retail  
Profile: N65 - 400  
Material: 1.0 mm aluminum  
Color/Surface: silver metallic / PVDF  
Area: 13 000 m²



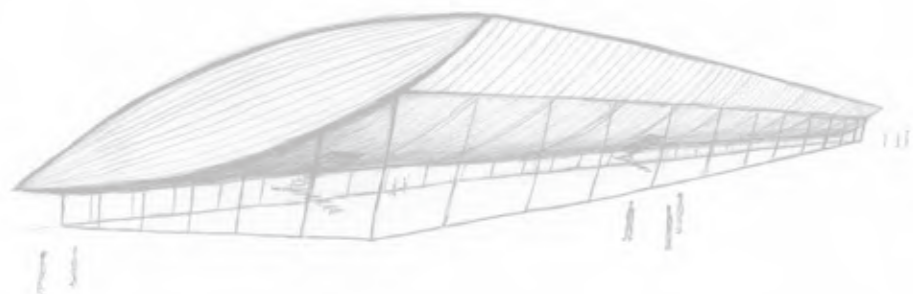
Roofs that make a statement. BEMO has been executing and managing exceptional projects for several decades – for buildings in many countries, in a multitude of climates. Our extensive experience helps us ensure our customers exceed their expectations. Time and time again.

*Whether it's a sports stadium, an airport or an arts center: using state-of-the-art three-dimensional tools, we create made-to-measure solutions for creative challenges across the globe.*



# THE ULTIMATE GOAL OF ARCHITECTURE IS TO ENHANCE OUR LIVES.

*"Is there anything more practical  
than great architectural design?"*



Every designer and architect knows: it is not enough for a structure to simply look good. It also has to be technically feasible and cost efficient. BEMO can help you strike the right balance between aesthetics and practicality. Drawing on our expertise and deploying advanced mobile production equipment, we can manufacture products and components at the construction site. This enables us to offer flexible solutions in line with your imperatives for a tailor-made shape.

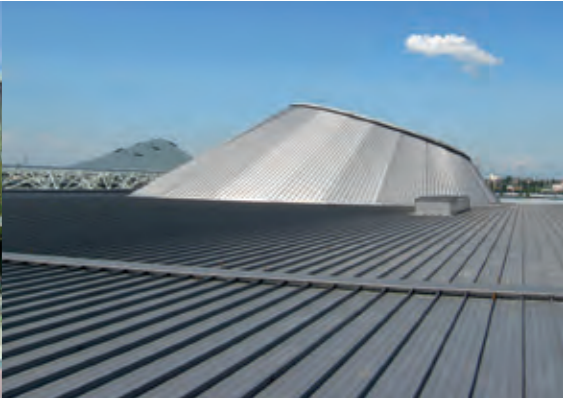
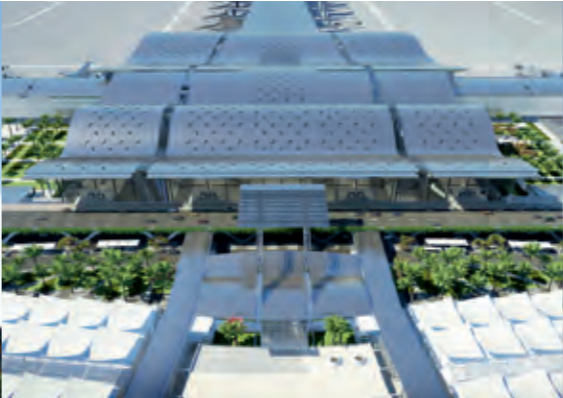
*When it comes to selecting materials, we don't just think about appearance, we also consider all key criteria, such as durability and ease of maintenance. Our approach enables longer intervals between cleaning, for example. In addition, three-dimensional measurements help us optimize the substructure, enabling simpler, safer assembly.*

*We are only completely satisfied with our solutions if they fulfill multiple requirements – like the new BEMO-SOL, currently the most cost-effective, integrated solar thermal collector on the market. It is efficiency you can see and feel.*

# EFFICIENCY



❖ Petrobras // Brazil  
Usage: research center  
Profile: N65 - 400  
Material: 1.0 mm aluminum  
Color/Surface: white / PVDF  
Area: 65 000 m²



❖ Digestion Tower // Austria  
Usage: purification plant  
Profile: BEMO-MONRO®  
Material: 1.0 mm aluminum  
Color/Surface: silver metallic / PE  
Area: 1 000 m²

❖ New Doha International Airport // Qatar  
Usage: airport  
Profile: N65 - 400  
Material: 0.8 mm stainless steel  
Color/Surface: InvariMatte / III C  
Area: 300 000 m²

❖ Cultural Center // Netherlands  
Usage: culture  
Profile: N65 - 400  
Material: 1.0 mm aluminium  
Color/Surface: silver metallic / PVDF  
Area: 2 250 m²

❖ Exhibition Center // Italy  
Usage: exhibitions / culture  
Profile: N65 - 400  
Material: 0.9 mm aluminium  
Color/Surface: grey metallic / PE  
Area: 350 000 m²



BEMO products and services are used in various applications. At Qatar Airport, high-tensile 0.8 mm thick stainless steel ensures enduring protection from corrosion in a coastal region. In the oil industry, a special aluminum alloy that offers high resistance to chemicals is particularly popular.

*BEMO-MONRO® panels mounted on the BEMO-DOME substructure help compensate for large tolerances in concrete structures on purification plant digestion towers. In addition, continuous panels, over 80 meters long, offer effective protection against moisture on inclined roofs – in particular for exhibition centers, like the one in Milan. In time-critical industrial engineering projects, rapid assembly of large-area surfaces is paramount.*



# OUR GREATEST SOURCE OF INSPIRATION IS THE NATURAL WORLD. THAT'S WHY WE'RE PROTECTING IT.

*"For most people,  
sustainability is about the distant future.  
For us, it begins here and now."*



A responsible approach. We put a great deal of energy into ensuring that buildings require as little energy as possible. How? Through innovative systems and solutions.

By leveraging state-of-the-art glass-fiber reinforced materials, we create a roof structure that avoids the transfer of heat from roof to building. Our specially-designed attachment systems enable the creation of seamless surfaces that are ideal for the deployment of photovoltaic and solar thermal technology.

*Aluminum is the ultimate eco-friendly material: it is 100 percent recyclable. In fact, 75 percent of the aluminum ever manufactured is still in use today.*

*BEMO-EcoClean™ coating is a breath of fresh air for your building. It is self-cleaning and actively contributes to a cleaner, greener atmosphere. A 1 000 m<sup>2</sup> area of BEMO-EcoClean™ has the same neutralizing effect on smog as 80 trees.*

*This and other examples reflect our philosophy: it is not enough for a project to be an immediate success. It has to be a lasting success.*

# DURABLE





❖ Office Building // Germany  
Usage: industry  
Profile: N65 - 400  
Material: 1.0 mm aluminum  
Color/Surface: stucco  
Area: 440 m²



❖ Kindergarten // Germany  
Usage: education  
Profile: N65 - 500  
Material: 1.0 mm aluminum  
Color/Surface: silver metallic, yellow, orange / BEMO-FLON  
Area: 1 200 m²



❖ Solar Roof // Germany  
Usage: industry  
Profile: VF65 - 422, BEMO-AKKORD  
Material: 0.8 mm aluminum  
Color/Surface: stucco  
Area: 6 400 m²



❖ Digestion Tower // Germany  
Usage: purification plant  
Profile: BEMO-MONRO®  
Material: 1.2 mm aluminum  
Color/Surface: grey metallic / BEMO-FLON  
Area: 850 m²



❖ Clifford Pier // Singapore  
Usage: harbor pier  
Profile: N65 - 400  
Material: 1.0 mm aluminum  
Color/Surface: silver metallic / PVDF  
Area: 3 000 m²



At BEMO, environmental and economic goals go hand in hand. Our high-quality aluminum coatings such as PVDF or BEMO-FLON ensure long-lasting roofs and façades, even in tropical climates like Singapore or volatile micro climates like those found at purification plants.

*BEMO-FLON, an extremely low-maintenance coating, ensures longer intervals between cleaning at a kindergarten in Freiberg, reducing the need for chemicals. BEMO-VERT provides an ideal surface for plants, minimizing the ecological footprint of the building. BEMO-AKKORD is a secure, seamless roof construction ideal for the deployment of solar technology. BEMO can help owners and architects with energy efficiency and credits towards LEED's certification.*



# EVEN THE GRANDEST OF VISIONS ARE WORTH NOTHING WITHOUT ATTENTION TO DETAIL.

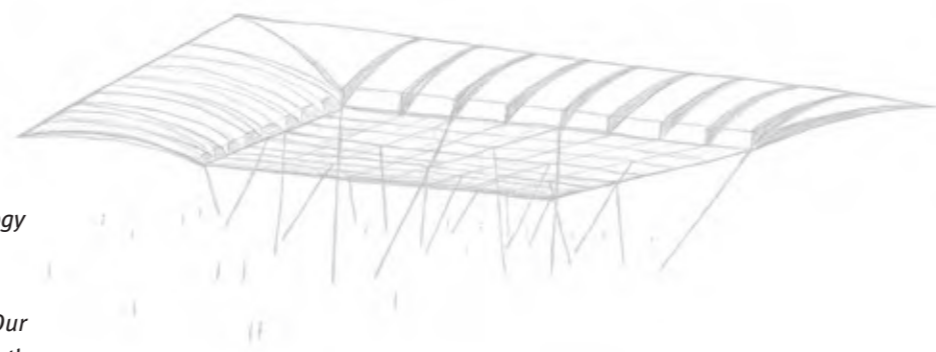


Significant buildings stand out in a crowd because their form and material are in perfect harmony. Every single component, every last detail must comply with the highest of quality standards. And this is not just empty theory. It's the credo by which we operate on a practical, day-to-day basis.

We deploy only high-quality materials from reputable suppliers. The multitude of materials, surfaces and coatings can be combined to produce excellent results. Our three-dimensional design and flexible substructure system, BEMO-DOME, are the ideal foundation for our freeform solution BEMO-MONRO®.

*BEMO's German engineered technology is respected around the world and, thanks to our patented production processes, is universally available. Our file-to-factory software ensures smooth transition from drawing board to production plant.*

*Whatever your goals, you can count on outstanding quality from BEMO at every stage of your project.*



*"I want technology to follow my idea.  
Not the other way around."*

# COMPLETE



THE SQUIRE // Germany  
Usage: New Work City  
Profile: BEMO-MONRO®  
Material: 1.0 mm aluminum  
Color/Surface: silver metallic / PVDF  
Area: 17 000 m²



Velodrome // Greece  
Usage: sports  
Profile: N65 - 400  
Material: 1.0 mm aluminum  
Color/Surface: white / PVDF  
Area: 11 500 m²



Shopping Center // Spain  
Usage: retail  
Profile: BEMO-MONRO®  
Material: 1.0 mm aluminum  
Color/Surface: titanium look / PUR/PA  
Area: 5 000 m²



Railway Station // Germany  
Usage: infrastructure  
Profile: N65 - 333  
Material: 1.0 mm aluminum  
Color/Surface: stucco  
Area: 6 000 m²



Sacramento International // USA  
Usage: airport  
Profile: N65 - 400  
Material: 0.85 mm stainless steel  
Color/Surface: III C  
Area: 19 000 m²



Successful projects are the result of close collaboration between all partners and start with meticulous planning. BEMO works hand in hand with architects, international contractors and construction and installation teams. Very often, we manufacture products and components tailor-made on site.

*This enables us to cost-effectively produce extremely long panels, like those deployed at the Velodrome in Athens or the Sacramento Airport, and concave or convex curves – without compromising on quality. THE SQUIRE at the Frankfurt Airport is 680 meters long and located directly next to a highway. It is a prime example of excellent logistics and intelligent choice of materials at this busy metropolitan transport hub.*

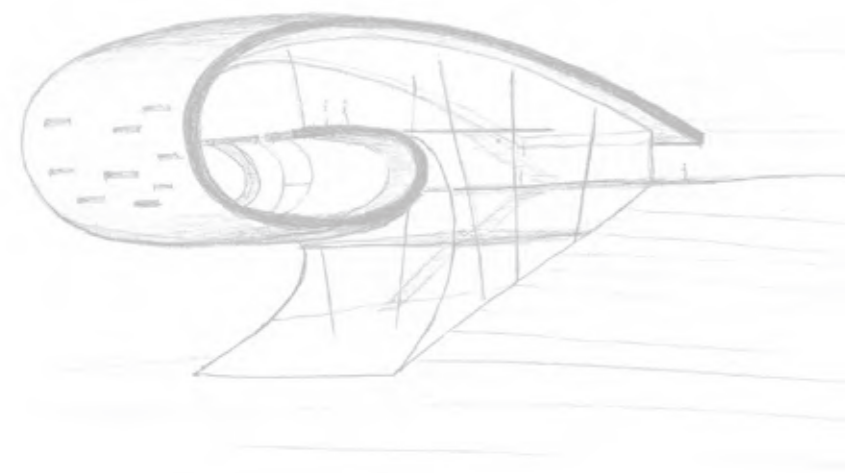


## WHAT'S THE KEY COMPONENT OF A BEMO ROOF? CREATIVITY.

*"You shouldn't take every idea, and immediately give it form.  
But it's good to know that you could."*



Attention-grabbing architecture always has its own particular style. At BEMO, we aim for one-of-a-kind, unforgettable structures. And we actively encourage taking an out-of-the-box approach.



*BEMO offers panels of variable widths and lengths of over 100 meters. Even extremely small convex and concave forms are possible, and these can be combined to great effect with the diverse shapes offered by BEMO-MONRO® – for seamless, harmonious transitions between cladding and roof.*

*Hand in hand with you, we develop a solution that is tailored to your specific challenges and goals – and in step with your unique style.*

# FREEDOM



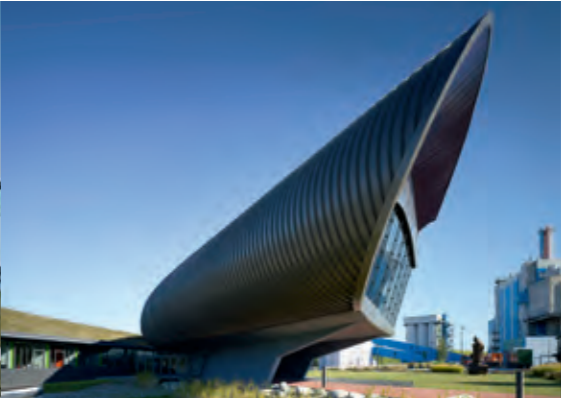
❖ Sports Arena // Hungary  
Usage: culture / sports  
Profile: BEMO-MONRO®  
Material: 1.0 mm aluminum  
Color/Surface: arena look / PUR/PA  
Area: 27 000 m²



❖ ISS Dome // Germany  
Usage: sports  
Profile: BEMO-MONRO®  
Material: 1.0 mm aluminum  
Color/Surface: silver metallic / PE  
Area: 8 000 m²



❖ SEW Eurodrive // Brazil  
Usage: industry  
Profile: N65 - 400  
Material: 0.65 mm galvalume  
Color/Surface: native  
Area: 30 000 m²



❖ Office Building // Germany  
Usage: industry  
Profile: BEMO-MONRO®  
Material: 1.0 mm aluminum  
Color/Surface: dark grey / PVDF  
Area: 1 200 m²



❖ Music Hall // France  
Usage: exhibitions / culture  
Profile: BEMO-MONRO®  
Material: 1.0 mm aluminum  
Color/Surface: grey metallic / PVDF  
Area: 6 000 m²



Flowing lines, round or oval building forms and seamless, harmonious transitions between roof and façade. These are the typical attributes of our award-winning MONRO technology. In Düsseldorf's ice-skating arena ISS, these characteristics are expertly combined with a demanding, complex roof structure. Furthermore the stadium in Budapest boasts an eye-catching Arena surface.

*Thanks to concave or convex curving, the standing seam panels can be formed to fit the shape defined during three-dimensional planning. Whether in Brazil, France or anywhere else in the world – we can meet your specific requirements.*



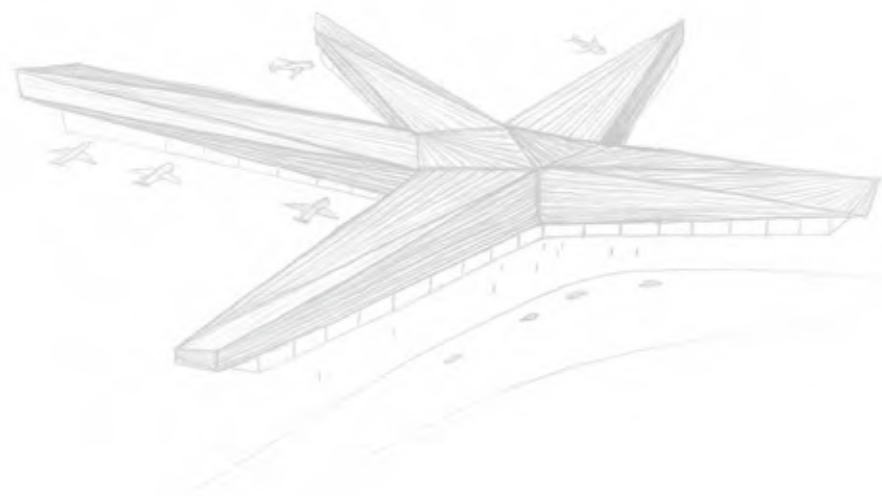
## WE WORK AND THINK LIKE YOU DO: ACROSS BOUNDARIES.



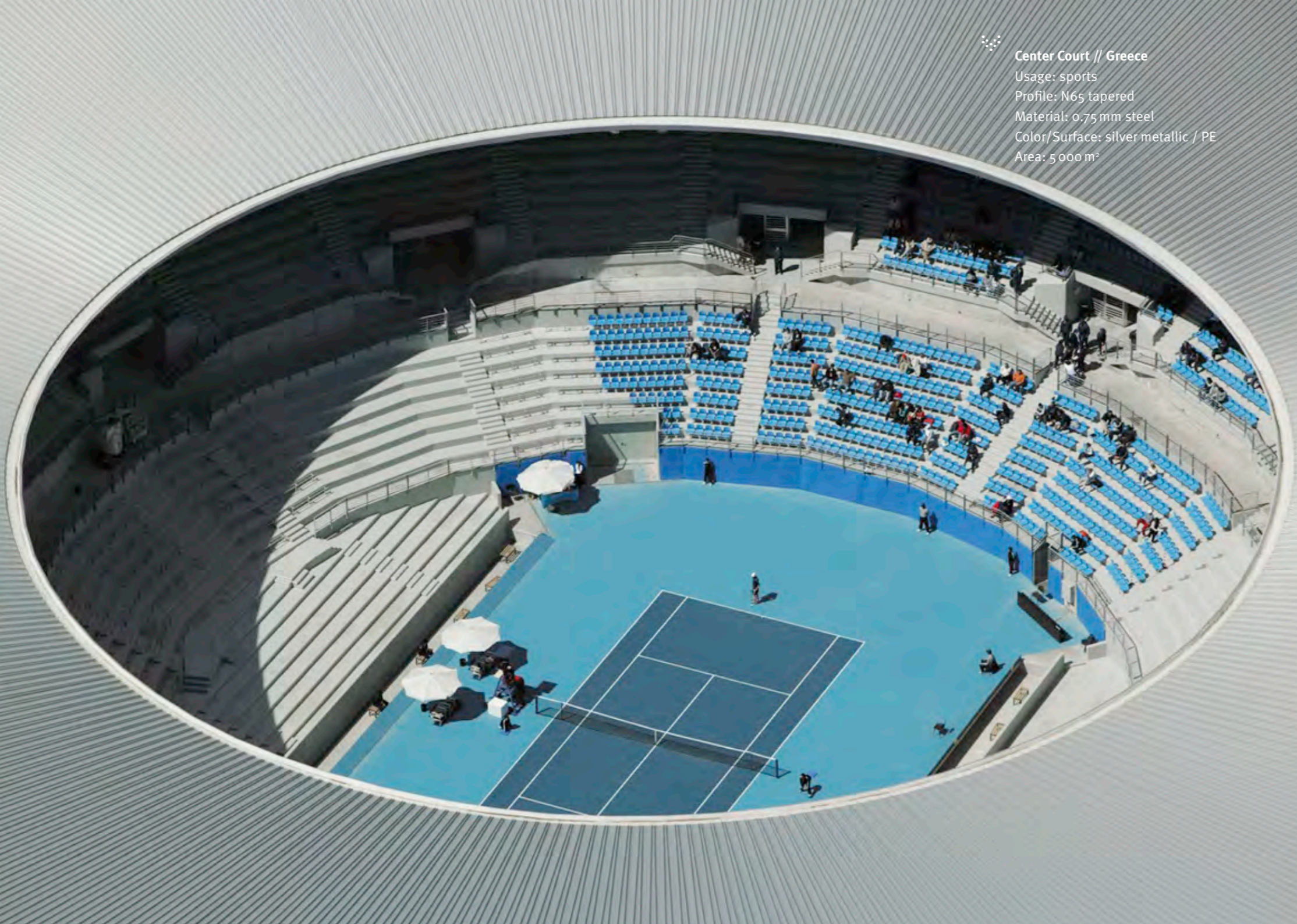
Three strong companies. One global brand. From BEMO Germany, to BEMO USA to BEMO Brazil. With subsidiaries and partners in the UK, India, Singapore and the Middle East.

*BEMO works with an international network of expert construction and installation teams. Which means, no matter where you are in the world, you can be certain of one thing: outstanding quality from BEMO. We're there to support you wherever your project is.*

*"Architecture is a language  
that is understood the world over."*



# CONNECTED



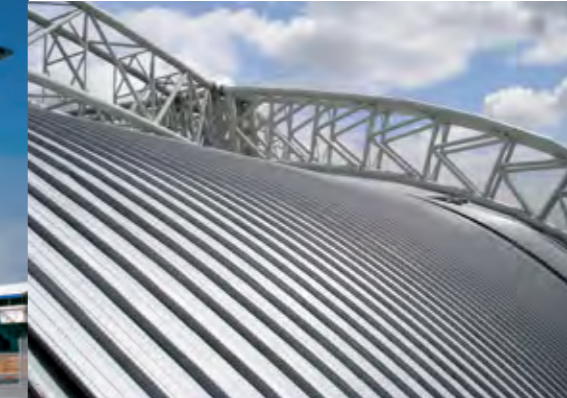
Center Court // Greece  
Usage: sports  
Profile: N65 tapered  
Material: 0.75 mm steel  
Color/Surface: silver metallic / PE  
Area: 5 000 m²



Garland Special Events Center // USA  
Usage: sports  
Profile: N65 - 400  
Material: 1.0 mm aluminum  
Color/Surface: bare aluminum  
Area: 22 300 m²



Formula 1 Grandstand // Spain  
Usage: sports  
Profile: N65 - 400  
Material: 1.0 mm aluminum  
Color/Surface: bare aluminum  
Area: 17 000 m²



Soccer Stadium // Turkey  
Usage: sports  
Profile: N65 - 400  
Material: 1.0 mm aluminum  
Color/Surface: silver metallic / PVDF  
Area: 33 000 m²



Visitor Center // Scotland  
Usage: leisure  
Profile: N65 - 400  
Material: 0.9 mm aluminum  
Color/Surface: stucco  
Area: 1 750 m²



A successful track record in all temperature zones underscores BEMO's outstanding skill. Whether it's the tropical climes of Africa, South America or Asia; deserts in the Middle East; permafrost regions; or coastal areas, BEMO's expertise is second to none. The wide choice of materials and our extensive experience make dreams a reality – all around the globe.

*We comply with EN, US and British standards. Including FM and LEED's, and meet all European requirements. Our team of engineers is international and multi-lingual and our skilled construction and installation professionals are available almost anywhere on the planet.*



# THE SKY'S THE LIMIT. WHAT BETTER INSPIRATION IS THERE?

*"You can only create a vision  
by breaking down boundaries."*



Freedom to think. Freedom to create.  
Freedom to plan. You have your very  
own ideas about form, color and style.  
And we have the knowledge required to  
turn them into reality – while taking a  
responsible approach to ecological and  
economical imperatives.

*BEMO is your expert partner for  
architectural excellence – from  
planning, to consulting, to execution.  
We are constantly stretching the limits  
and pushing back the boundaries  
of the possible. Giving shape to ideas.  
Your ideas. Your visions.*

## DESIGN FREEDOM

DISTINCTIVE INDIVIDUALITY

## COST EFFICIENCY

## SUSTAINABILITY

# THE SKY'S THE LIMIT

## ACHIEVED EXCELLENCE

## GLOBAL SUCCESS





# WWW.BEMO.COM

**BEMO Systems GmbH**

Friedrich-List-Straße 25  
74532 Ilshofen-Eckartshausen  
Germany

T: +49 7904 9714 70  
F: +49 7904 9714 246  
E: sales@bemo.com  
W: www.bemo.com.de

**BEMO USA Corporation**

3062 N. Maple Street  
Mesa  
Arizona USA 85215-1115

T: +1 480 545 7900  
F: +1 480 545 4999  
E: sales@bemousa.com  
W: www.bemousa.com

**BEMO do Brasil**

Sistemas Metálicos Ltda.  
Av. Prestes Maia 539 - Bloco VI  
Centro - Diadema/SP

T: +55 11 4053 2366  
F: +55 11 4043 1218  
E: comercial@bemo.com.br  
W: www.bemo.com.br

**KeyBEMO Ltd**

High Edge Court  
Church Street, Heage, Belper  
Derbyshire, DE56 2BW

T: +44 773 853 694  
F: +44 773 857 599  
E: sales@keybemo.co.uk  
W: www.keybemo.co.uk

**BEMO International Pte Ltd**

15 Tuas Avenue 4  
Singapore 639367  
Republic of Singapore

T: +65 6862 5311  
F: +65 6861 8275  
E: sales@bemointernational.com  
W: www.bemo.com

**BEMO Project Engineering**

(ME) L.L.C  
P.O. Box 14546  
Ras Al Khaimah, UAE

T: +971 7 244 4566  
F: +971 7 244 4577  
E: sales@bemo.com  
W: www.bemo.com

**BEMO Qatar WLL**

P.O. Box 19584  
Doha  
State of Qatar

T: +974 4466 6067/69  
F: +974 4466 6071  
E: sales@bemointernational.com  
W: www.bemo.com